

# Envision IT SLIM 2.2

*Installation Document*

## Private and Confidential

December 7, 2011

**Envision IT**  
7145 West Credit Avenue  
Suite 100, Building 3  
Mississauga, ON L5N 6J7





## Table of Contents

<b>INTRODUCTION .....</b>	<b>2</b>
SUPPORTED DEPLOYMENT SCENARIOS.....	2
UNSUPPORTED DEPLOYMENT SCENARIOS .....	2
<b>INSTALLATION .....</b>	<b>3</b>
DEPLOY AND ACTIVATE EIT.SILVERLIGHT.SLIM.WSP SHAREPOINT SOLUTION PACKAGE .....	3
CONFIGURE XAP MIME TYPES IN IIS .....	5
CONFIGURING HTTP HANDLER SETTINGS IN WEB.CONFIG FOR EACH WEB SITE .....	6
UPLOADING THE SHAREPOINT LIST TEMPLATES FOR SLIM .....	7
CREATING AND CONFIGURING SLIM LIBRARY SELECTOR SHAREPOINT LIST.....	7
CREATING AND CONFIGURING SHADOWIMAGES SHAREPOINT LIBRARY .....	9
CREATING AND CONFIGURING CUSTOM CRAWLER LIST .....	9
<i>List Templates .....</i>	<i>9</i>
<i>Configuring SLIM Library Selector SharePoint List .....</i>	<i>10</i>
SEARCH SETUP.....	11
<i>Add Scopes .....</i>	<i>11</i>
<i>SharePoint Library Search Scope.....</i>	<i>13</i>
<i>All Images Search Scope.....</i>	<i>13</i>
<i>Where Image Used Search Scope (Obsolete in SLIM 2.2).....</i>	<i>13</i>
<i>Live Search .....</i>	<i>13</i>
<i>Google Search .....</i>	<i>13</i>
INSTALLATION AND CONFIGURATION OF SLIM CUSTOM CRAWLER (SLIM 2.2).....	14
<i>WhereImagesUserCrawler config file .....</i>	<i>15</i>
<i>LastChangeIds.xml.....</i>	<i>16</i>
DEPLOYMENT OF ASSETPICKERS.JS .....	17
<b>APPENDIX A: DISABLING CLIENT-SIDE CACHING FOR DEBUGGING NEW VERSIONS OF THE XAP FILE .....</b>	<b>19</b>
<b>APPENDIX B: CUSTOMIZING THE ASSETPICKERS.JS DEPLOYED BY EIT.SILVERLIGHT.SLIM.WSP SOLUTION FILE ....</b>	<b>20</b>
<b>APPENDIX C: MANUALLY DEPLOYING RESAMPLING DLL IN THE WEB SITE BIN FOLDER (FOR DEBUGGING ONLY) 22</b>	<b>22</b>
<b>APPENDIX D: COPY THE CROSS DOMAIN SECURITY XML FILES TO THE ROOT OF THE WEB SITE.....</b>	<b>23</b>
<b>APPENDIX E: SLIM SILVERLIGHT CONTROL CONFIGURATION .....</b>	<b>24</b>
<b>APPENDIX F: SHADOW IMAGES URL REPLACER .....</b>	<b>26</b>
<b>APPENDIX G: TELERIK RAEDITOR FOR ASP.NET AJAX INTEGRATION .....</b>	<b>28</b>

## INTRODUCTION

SLIM (Silverlight Image Management) installation is currently a manual process. No setup.exe or feature type installation has been developed at this time. The steps to be followed for installation are as follows.

### Supported Deployment Scenarios

The following deployment scenarios are supported by this version of SLIM:

1. Centralized Server Farm Deployment
  - Single instance/version of the SLIM software components deployed on each WFE (web front-end server)
    - All web applications use the same instance/version of the components
  - All SLIM software components are packaged and deployed as a SharePoint Solution Package (.wsp file)
  - This scenario includes a farm with multiple WFEs as well as a farm (or basic installation) that has a single WFE


### Unsupported Deployment Scenarios


- Multiple Version Deployment: co-existence of multiple versions of SLIM on a single farm

## INSTALLATION

### Deploy and Activate EIT.Silverlight.SLIM.wsp SharePoint Solution Package

The SLIM application is compiled and zipped into the XAP file (you can open the XAP file in WinZip to see it contains a lot of dlls )

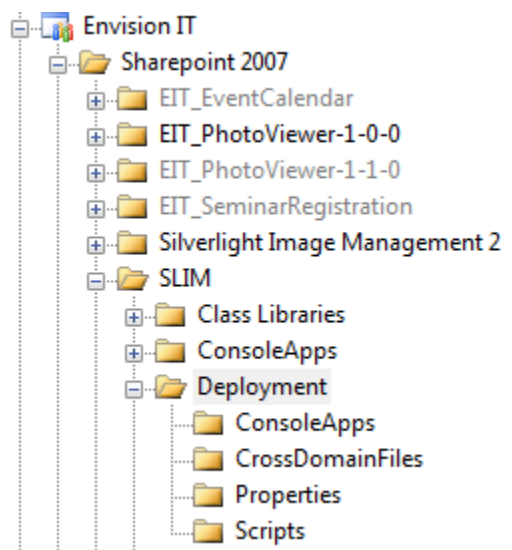
 SilverlightImageManagement2.xap

 EIT\_SPSLIM2.aspx

#### Deploy SLIM to your SharePoint server

1. From TFS, get a copy of the Envision IT/SharePoint 2007/SLIM/Deployment folder and save it to the following folder on the hard drive of the deployment server.

**c:\EnvisionIT\SLIM\Deployment**



2. Navigate to the Scripts directory
3. Execute **doSolutionDeployment.cmd**
4. After the script is completed successfully , open the **doActivateFeatures.cmd** and edit the **WEBSITE\_URL** to your site
5. Execute **doActivateFeatures.cmd**

The following files are deployed to the SharePoint/12/TEMPLATES/Layouts/EIT.Silverlight.SLIM:

- **ClientBin/SilverlightImageManagement2.xap**
- **ClientPages/ EIT\_SPSLIM2.aspx**

In addition:

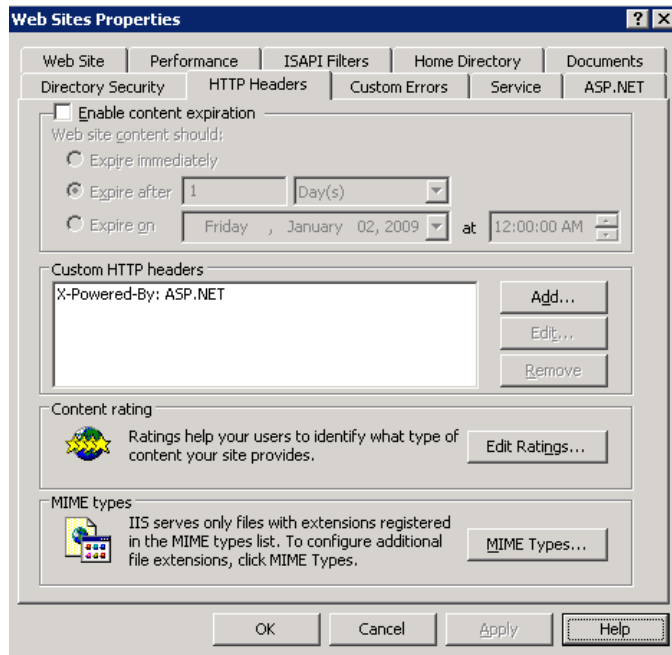
- the SharePoint List Templates for SLIM are uploaded to the List Template Gallery for the web application's root site collection.
- the Image Resampler DLL is placed in the GAC.
- A copy of an example AssestPickers.js is provided in Layouts/1033.

The Silverlight control can be hosted any number of ways, but the **EIT\_SPSLIM2.aspx** is designed to interact with the Web Content Management (WCM) features of SharePoint (MOSS 2007).

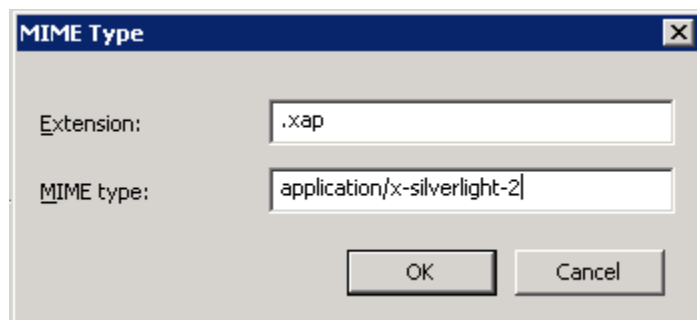
## Configure XAP MIME Types in IIS

For XAP to be served up from the file system (e.g. from the \_layouts directory) ,IIS has to recognize the file type and resolve it to the MIME type “application/x-silverlight-2” .

1. In IIS Manager, right-click on the Web Sites node and select Properties
2. Select the HTTP Headers tab
3. Click MIME Types



4. Click to New... to add the following MIME Type (if it doesn't already exist)



## Configuring HTTP Handler Settings in web.config for each Web Site

Image Resampling (making an image have more or less pixels than it originally had) requires an additional HTTP Handler on the Server.

The Resampling dll has to be accounted for in the Web.config (which is in the directory above the bin folder)

The "Path" should match the location of the SLIM Library Selector List (below)

### SharePoint 2007

```
<system.web>
...
<httpHandlers>
...
  <!-- Envision IT Image Resampler -->
  <add verb="*" path="ImageResampler.ashx"
type="EIT_ImageResampler.cImage,EIT_ImageResampler, Version=2.2.0.0, Culture=neutral,
PublicKeyToken=f5aac7f3fcb9e5db" />
  </httpHandlers>
```

### SharePoint 2010

```
<system.webserver>
...
<handlers>
...
  <!-- Envision IT Image Resampler -->
  <add name="EIT_ImageResampler" verb="*" path="ImageResampler.ashx"
type="EIT_ImageResampler.cImage,EIT_ImageResampler, Version=2.2.0.0, Culture=neutral,
PublicKeyToken=f5aac7f3fcb9e5db" />
  </handlers>
```

The version number of this assembly changes each time the project is built. To confirm the version number of the assembly you are using,

1. Open Windows Explorer and navigate to c:\Windows\assembly
2. Scroll down to EIT\_ImageResampler
3. Right click on this assembly and select Properties
4. Verify that the version number is correct (as well as the public key token)

## Allow ASHX Files

By default, SharePoint configures .ashx files as a blocked file type, and will not serve content from that file extension. This restriction must be removed for the image resampler to work.

1. Go to Central Administration
2. Select the Security section
3. Select Define blocked file types
4. Select the appropriate web application(s)
5. Delete the ashx row
6. Click OK to save the changes

## Uploading the SharePoint List Templates for SLIM

The previous steps cause the SharePoint List Templates for SLIM to be upload the web application's root site collection. The following list templates can be found in the List Template Gallery:

- SLIM Crawler Sites
- SLIM Library Selector
- SLIM Image Library
- SLIM ShadowImages Library
- SLIM Where Images Used

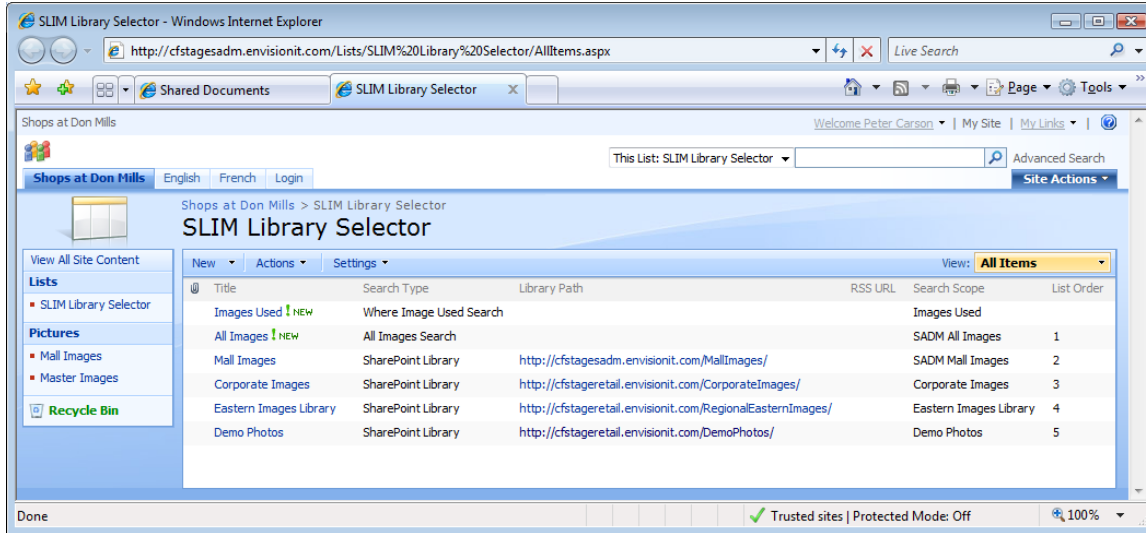
## Creating and Configuring SLIM Library Selector SharePoint List



The "SLIM Library Selector" list should be set up via the SLIM Library Selector STP template.

SLIM starts at the Site that it was opened in and walks up the tree looking for this library, so it should be in the highest site that you want to share with. (You can make one for every site if you have a different set of libraries for each)

You should also ensure that this List is available at the same level as the ImageResampler (above)



The structure of this list is as follows:

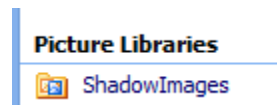
Field	Description
Title	Title to be displayed in the Image Search and Library Selector lists
Search Type	Type of record <ul style="list-style-type: none"> <li>• SharePoint Library – Shows in the Library Selector list</li> <li>• All Images Search – Scope and Name to display for the All Images search</li> <li>• Where Image Used Search – Scope to use for the “where is this image used search” when selecting an image</li> <li>• Live Search – Scope to connect to Microsoft Live image search</li> <li>• Google Search – Scope to connect to Google image search</li> </ul>
Library Path	URL of the library to be used when displaying the Library list of images. Note that Silverlight can only access HTTP if it is launched from HTTP and HTTPS if it is launched from HTTPS – Thus the same server should only be used for one or the other, type of access and not both (or libraries will not be accessed) - SLIM doesn’t currently switch the Schema. Relative URLs will work as well as full URLs. The URLs may or may not contain a trailing slash (/).  NOTE: For the Where Used Images item, the Library Path is the URL to the server. If left blank, it is assumed to be the URL of the local server.
RSS URL	
Search Scope	Search scope to be used for executing this search. This could be blank if a library was to be displayed but not searchable.  NOTE: For the Where Used Images item, the Search Scope name is the name of the Crawler Results SharePoint list. For this item, it’s not the

	name of an actual search scope. NOTE: There are special Search Scopes for Google and Live external searches. To be documented.
List Order	Order that the item should show in both the Image Search and Library Selector lists

## Creating and Configuring ShadowImages SharePoint Library



When the Images are resampled with the ImageResampler (above) they have to be put somewhere. That somewhere is the ShadowImages Picture Library.

The SLIM Silverlight application will get the image from the Resampler and POST it to the ShadowImages folder as the end user. Each Image Editor needs write access to this Library.



It should be at the same Level as the SLIM library Selector List and the Image Resampler as well.

This should be created from the SLIM ShadowImages Library document library STP template as well, as it has specific metadata that must be preserved (SourceImageURL in particular)

Name	File Type	Modified	Modified By	Thumbnail	Picture Width	Picture Height	Checked Out To	File Size	SourceImageURL
CorporateImages_0091159_67_100	jpg	1/16/2009 5:20 PM	Mark Jones		67	100		4 KB	http://cfdevretail.envisionit.com/CorporateImages/0091159.jpg
CorporateImages_0144293_64_100	jpg	1/16/2009 5:20 PM	Mark Jones		64	100		4 KB	http://cfdevretail.envisionit.com/CorporateImages/0144293.jpg

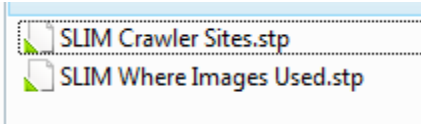
## Creating and Configuring Custom Crawler List

New in version 2.2, we have built our own HTTP crawler to catalogue which pages use which Images. This means that a search Scope is no longer needed, however there is additional configuration required.

### List Templates

There are 2 lists that need to be set up in SharePoint

Where to Crawl (“SLIM Crawler Sites”), and Where to put the results (“SLIM Where Images Used”)



The “SLIM Crawler Sites” list holds the top level Url of the sites to crawl, and a descriptive title, that is only seen by the crawler

Shops at Don Mills	<a href="http://cfdevsadm.envisionit.com">http://cfdevsadm.envisionit.com</a>
Toronto Eaton Centre	<a href="http://cfdevtec.envisionit.com/">http://cfdevtec.envisionit.com/</a>
Laval	<a href="http://cfdevlaval.envisionit.com">http://cfdevlaval.envisionit.com</a>
?? Hillcrest missing styles	<a href="http://cfdevcp.envisionit.com/">http://cfdevcp.envisionit.com/</a>
Office Tower Leasing	<a href="http://cftdleasingdev.envisionit.com/">http://cftdleasingdev.envisionit.com/</a>

In the simplest case, you would only have one row, and it would be for the full url for the single local server.

### Configuring SLIM Library Selector SharePoint List

So that SLIM will use the Crawled Where Images used list

Title	Search Type	LibraryPath	RSSURL	Search Scope	List Order
Images Used	Where Image Used Search			SLIMWhereImagesUsed	

The Library Path can be left Blank, for the local server, or it can specify a remote server (e.g. one server may collect all the images used path for several SLIM installations, or each site may configure its own.

Title	Search Type	LibraryPath	RSSURL	Search Scope
Images Used	Where Image Used Search	<a href="http://cfdevretail.envisionit.com/">http://cfdevretail.envisionit.com/</a>		SLIMWhereImagesUsed

The “Search Scope” column contains the name for the List of results, the “SLIM Where Images Used” results configured above.

If for some reason you want to turn off “Where Images are used” then this row should not be configured in the Library Selector List

## Search Setup

There are a number of different types of search scopes defined in the SLIM Library Selector list. Each has its own requirements as to how the scopes should be setup. The types are as follows:

- SharePoint Library – Shows in the Library Selector list
- All Images Search – Scope and Name to display for the All Images search
- Where Image Used Search – Scope to use for the “where is this image used search” when selecting an image
- Live Search – Scope to connect to Microsoft Live image search
- Google Search – Scope to connect to Google image search

## Add Scopes

- 1) Central Administration > Shared Services > Search Settings > View Scopes
- 2) Select the ‘New Scope’ button.
- 3) Enter the Search Scope Name and select ‘OK’. Ensure the SLIM Library Selector ‘Search Scope’ matches the new scope name.

Shared Services Administration: SharedServices > Search Settings > Scopes > Add Scope

### Create Scope

<p><b>Title and Description</b></p> <p>Type a unique title and description for your scope. The title is displayed in the search dropdown, search results pages, advanced search, and elsewhere.</p>	<p>Title: *</p> <input type="text" value="EIT Banner Images"/> <p>Description:</p> <input type="text"/> <p>Last modified by:</p> <input type="text" value="PCCLIMITED\moss_admin"/>
<p><b>Target Results Page</b></p> <p>Specify a specific search results page to send users to for results when they search in this scope, or choose to use the default.</p>	<p><input checked="" type="radio"/> Use the default Search Results Page</p> <p><input type="radio"/> Specify a different page for searching this scope</p> <p>Target results page: *</p> <input type="text"/>

OK Cancel

- 4) Select the ‘Add Rule’ hyperlink associated to the new scope. Add a Rule to the scope. Ensure the SLIM Library Selector ‘Library Path’ matches the new scope folder path.

Shared Services Administration: SharedServices > Search Settings > Scopes > Scope Properties and Rules > Edit Scope Rule

## Edit Scope Rule

<p><b>Scope Rule Type</b></p> <p>Scope rules define what is in or not in a scope. Use different types of rules to match items in various ways</p>	<p><input checked="" type="radio"/> Web Address (http://server/site)</p> <p><input type="radio"/> Property Query (Author = John Doe)</p> <p><input type="radio"/> Content Source</p> <p><input type="radio"/> All Content</p>
<p><b>Web Address</b></p> <p>Web Address scope rules can be used to create search scopes that include content in web sites, the shares, exchange public folders, or any other content in the search index that has a URL.</p> <p>Folder rules will include items in the folder and subfolders of the indicated path.</p> <p>Domain or hostname rules include all items within the specified domain or hostname.</p>	<p><input checked="" type="radio"/> Folder:</p> <p><input type="text" value="http://eitwebdev.envisionit.com/BannerImages/"/></p> <p>Example: http://site/subsite/folder</p> <p><input type="radio"/> Hostname:</p> <p><input type="text"/></p> <p>Example: servername</p> <p><input type="radio"/> Domain or subdomain:</p> <p><input type="text"/></p> <p>Example: office.microsoft.com</p>
<p><b>Behavior</b></p> <p>Decide how this rule should be applied to the overall scope. The scope-wide filter is used when combining the items matching all rules to determine what is in the scopes overall.</p>	<p><input checked="" type="radio"/> Include - Any item that matches this rule will be included, unless the item is excluded by another rule</p> <p><input type="radio"/> Require - Every item in the scope must match this rule</p> <p><input type="radio"/> Exclude - Items matching this rule will be excluded from the scope</p>

5) Perform the above steps for each item listed in the SLIM Library Selector.

In addition to the scopes, there are a number of other items that need to be properly configured for the SLIM search to work properly.

- Ensure that a content source is setup that is crawling all of the sites being used by SLIM, and that appropriate full and incremental crawl schedules are set
- Validate the crawl logs to ensure that the crawls are successfully running
- Often a crawl rule is implemented in SharePoint that excludes certain pages. It is important that there is not a rule excluding the `*://*DispForm.aspx*` pages, which are required to properly extract the image metadata
- Ensure that JPG and GIF are not entered as Managed File Types. By default they are not, but if they are added in the image metadata will not be crawled properly

### SharePoint Library Search Scope

Normally any SharePoint library should be searchable explicitly through SLIM. This is done by defining a scope specific to that library, and entering the name of the scope in the SLIM Library Selector list. The scope should be setup with an Include rule that includes the folder for the image library.

### All Images Search Scope

The All Images searches all images that are available for a particular site. Since SLIM can be installed for multiple sites (URLs) on one server, each needs its own scope. This scope should include folders for all of the libraries available in SLIM on that site. Suggested naming convention is to call this scope “*Site Name All Images*”, to be clear which site it applies to.

### Where Image Used Search Scope (Obsolete in SLIM 2.2)

The Where Image Used property was used in SLIM 2.1 and replaced in SLIM 2.2 with the new SLIM Custom Crawler functionality.

### Live Search

Bing Image Search	All Images Search	Live	9
-------------------	-------------------	------	---

Create a Row with “All Images Search”, and the Search Scope set to “Live”

### Google Search

Google Image Search	All Images Search	Google	9
---------------------	-------------------	--------	---

Create a Row with a “All Images Search” and the Search Scope set to “Google”

## Installation and Configuration of SLIM Custom Crawler (SLIM 2.2)

The Two lists are configured above

The EXE is a console application – designed to be run in an automated fashion with its output logged to a file. The SQL server Agent is one method, as is Windows Task Scheduler.

WhereImagesUsedCrawler.exe requires the 3.5 version of the .NET CLR installed on the machine, that the crawler will run from. There is a service pack, which is recommended.

Download from here:

<http://www.microsoft.com/downloads/details.aspx?FamilyID=ab99342f-5d1a-413d-8319-81da479ab0d7&DisplayLang=en>

See Deployment\ConsoleApps directory for EXE and config. It is not automatically deployed to the server in the WSP file.

### WhereImagesUsedCrawler.exe

There are a few command line switches that can be used

#### **-help**

```

Envision IT - SLIM Silverlight Image Management - Where Images Used Crawler Console App - 2.2.2.5
-----
Starting at 2010-Jan-06 4:49:05 pm

This application crawls the SiteData webservice for SharePoint 2007 and logs images used on aspx pages

Both the list of sites to crawl (SLIM Crawler Sites)
and the list to store the results in (SLIM Where Images Used)
Must be configured on the SharePoint server.

Command Line Options:
-r[eadonly]      READONLY Mode
-i[ncremental]  Incremental Mode - ask for changes since the last run (stored in LastChangeIDs.xml)
-f[ull]         full crawl Mode - Delete all founds images and start again from scratch - find all aspx Pages
-h[elp]        this help page
-?             this help page

The Server URL (where the 2 lists are found), and any logon credentials are in the .config file
<add key="SLIMCrawlerSitesServerURL" value="<your server url>" />
<add key="Sharepoint.UserName" value="<your username>" />
<add key="Sharepoint.Password" value="<your password>" />
<add key="Sharepoint.Domain" value="<your domain>" />

Loaded 6 Last Change Ids from Previous runs

Using Credentials: pcclimited\moss_admin
Found List 'SLIMCrawlerSites' on Server http://cfdevretail.envisionit.com
Using Credentials: pcclimited\moss_admin
Found List 'SLIMWhereImagesUsed' on Server http://cfdevretail.envisionit.com

0 Images found on 0 Pages
Finished at 2010-Jan-06 4:49:06 pm

```

#### **-readonly**

Runs normally but no files or records are deleted or updated. You can use this to test the configuration, and see what files will be found, but the Crawler Results list is not updated.

**-full**

A full run, deletes the contents of the ("SLIM Where Images Used") list and looks for every aspx page in every /Pages/ folder that can be found in every site.

This should be run once, to initialize, and then only Weekly after that to catch any files missed during Incremental running.

**-incremental**

The SiteData.asmx web service, is queried for all changes that were made, since the last time the program was run. If they appear to be ASPX pages, then those pages are parsed.

Only the records for the matching pages are deleted. If a page is deleted from the system, it should get removed from the list in this case.

It is suggested that the crawler be scheduled to run incremental mode every 5 to 15 minutes during the day when changes are likely to be made to the server pages using SLIM.

It is NOT recommended to run the incremental version, while the Full Crawl is running. so the schedule should be modified to exclude the time you expect the full crawl to run

(e.g. run full crawl Sunday at 1AM, and run the incremental crawl M-F 7AM to 7PM for instance)

**WhereImagesUserCrawler config file**

The .config file contains many lines, that can be ignored from the configuration

Look only at the <appSettings> section

```
<!-- Server to go and Look for SLIMCrawlerSites List -->
```

```
<add key="SLIMCrawlerSitesServerURL" value="http://cfdevretail.envisionit.com" />
```

The SLIMCrawlerSitesServerURL is how the lists are found – when run it will indicate that the configuration and the results list are available on the configured server

```
Using Credentials: pcclimited\moss_admin  
Found List 'SLIMCrawlerSites' on Server http://cfdevretail.envisionit.com  
Using Credentials: pcclimited\moss_admin  
Found List 'SLIMWhereImagesUsed' on Server http://cfdevretail.envisionit.com
```

Often the account that runs the Crawler, is not the same server as the SharePoint site. so you may wish to specify the SharePoint credentials when connecting to SharePoint.

These settings can be omitted, if the local account running the exe has the required privs to read and write to the lists and crawl the server .

```
<!-- Login Info for Sharepoint - if MISSING then app will try and use default -->  
  
<add key="Sharepoint.UserName" value="moss_admin" />  
  
<add key="Sharepoint.Password" value="*****" />  
  
<add key="Sharepoint.Domain" value="pcclimited" />
```

If your password contains “&”, be aware that & is not a valid XML character. It must be specified as “&amp;” or the exe will fail to run with the somewhat cryptic message: “The system cannot execute the specified program.”.

This usually means the config file is not valid XML, preventing it from loading, and the exe from starting.

### **LastChangeIDs.xml**

When the EXE is run, it will Read and Write the Change id Tokens to a local file, in the same directory as the EXE and .Config file.

This allows it know what Token it used when it last ran, and thus get the changes Since that run. Incremental mode can not work without this file. Full mode, will update this file, unless –Readonly is specified on the command line

## Deployment of AssetPickers.js

The WSP deploys the LAYOUTS/1033 file “AssetPickers-SLIMSample.js”

This file is meant to replace the standard “AssetPickers.js” file supplied by Microsoft.

You need to backup the standard AssetPickers.js and replace it with the contents of AssetPickers-SLIMSample.js file. Microsoft may update the javascript in this file, and we don't want to just overwrite those changes.

(e.g. rename AssetPickers.js to AssetPickers\_MSORig.js  
rename AssetPickers-SLIMSample.js AssetPickers.js)

This allows SLIM to be used when editing Web pages in SharePoint.

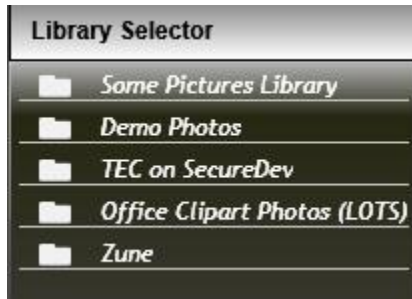
For more details and custom changes see [Appendix B](#).

## TESTING

Try Running directly from the Layouts folder


[http://someMossServer/layouts/EIT.Silverlight.SLIM/ClientPages/EIT\\_SPSLIM2.aspx](http://someMossServer/layouts/EIT.Silverlight.SLIM/ClientPages/EIT_SPSLIM2.aspx)

You should be able to Get the Library Folders

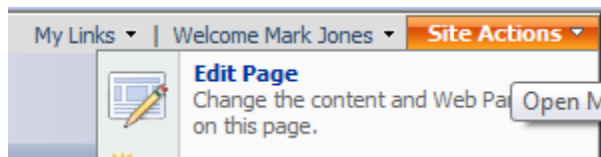


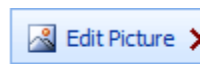

and See some images if you select a Library



If you , you should be able to resample it and see it in the ShadowImages Library.

To use on a Web Content Page



- 
- 
- SLIM should open with selected image
- Also if you are editing in the General HTML layout you can select the image icon form the tool bar



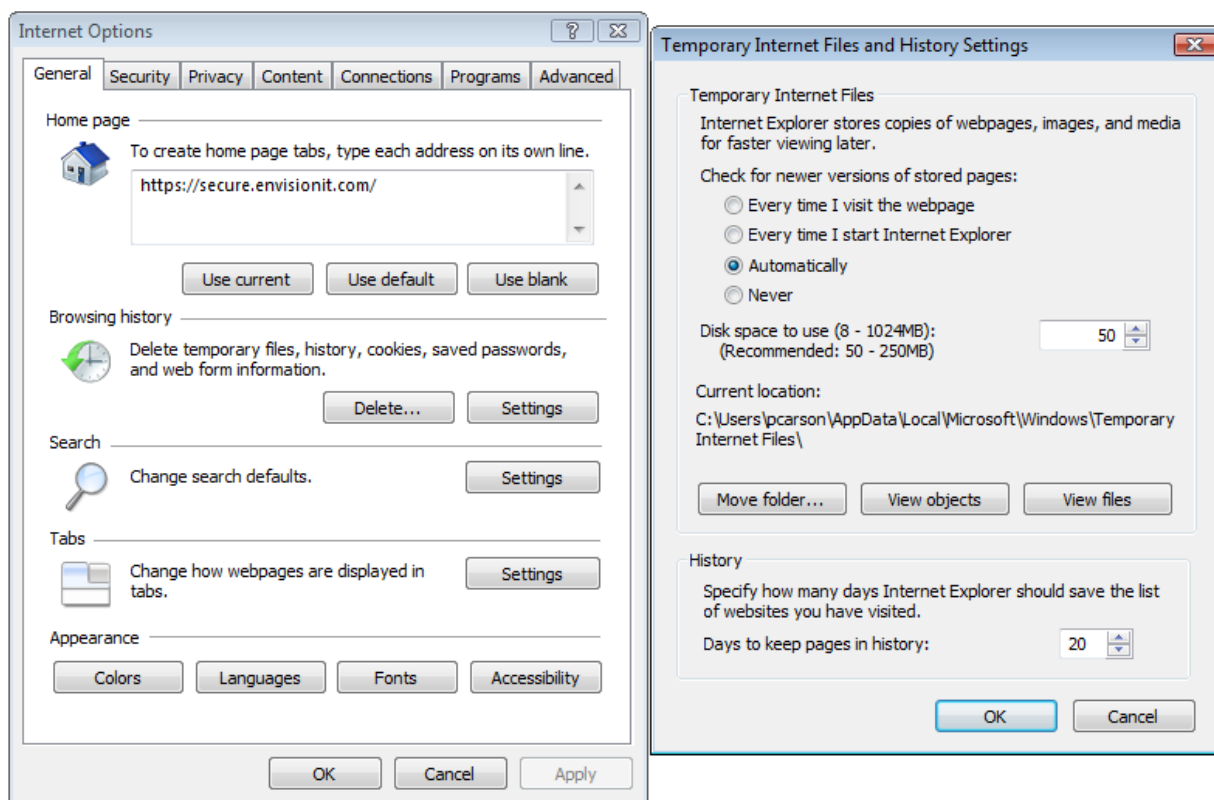
In this case, there is no hyperlink editing within SLIM

## APPENDIX A: DISABLING CLIENT-SIDE CACHING FOR DEBUGGING NEW VERSIONS OF THE XAP FILE

The most likely upgrade scenario for SLIM is to be deploying a new version of the XAP file. This is the compiled Silverlight file that contains all the client-side code and resources.

The main thing to be aware of when upgrading the XAP file is that is cached by the browser on the local client machines. In order to see the updated version, the old version needs to be deleted first. This can be done in two ways:

- Go to the Internet Options under Tools in the browser on the client machine, and select Delete under browsing history. This deletes all cached files, as well as cookies, saved passwords, and other information
- If a less dramatic change is desired, select the Settings button, and then choose View files. In the Windows Explorer view that opens, sort by name or type, select all copies of the SilverlightImageManagement2.xap file, and delete them



This needs to be done for each user logged into each computer. A future idea on how to improve this is to embed a version number into the filename for the XAP file, so that as new versions are deployed, it doesn't matter if the old one is still in cache.

## APPENDIX B: CUSTOMIZING THE ASSETPICKERS.JS DEPLOYED BY EIT.SILVERLIGHT.SLIM.WSP SOLUTION FILE

If you have additional changes in your `AssetPickers.js` and would like to manually edit them do the following:

To integrate with WCM we have to modify a Microsoft JavaScript file

.../LAYOUTS/1033/AssetPickers.js

Make a Backup copy in case you need to revert to the original file

There are 4 variables to set. You want to replace any existing ones them with these values: (note that Word will wrap the text, each var should be on its own line

```
// SilverLight Image Selector V2 - now using ASPX page to get SPWeb context
// moved to _layouts - (Assumed in Relative URL)
var
CONST_ImageAssetPickerDialogName="EIT.Silverlight.SLIM/ClientPages/EIT_SPSlim2.aspx";
var CONST_ImageAssetPickerDialogFeatures="resizable: yes; status: no; scroll: no;
help: no; dialogWidth:960px; dialogHeight:860px;";

// also use it to replace the first dialog
// moved to _layouts - (Assumed in Relative URL)
var
CONST_EditImageDialogDialogName="EIT.Silverlight.SLIM/ClientPages/EIT_SPSlim2.aspx";
var CONST_EditImageDialogDialogFeatures="resizable: yes; status: no; scroll: no;
help: no; dialogWidth:960px; dialogHeight:860px;";
```

Here are the original Values that should be replaced

```
var CONST_ImageAssetPickerDialogName="AssetPortalBrowser.aspx"
var CONST_ImageAssetPickerDialogFeatures="resizable: yes; status: no; scroll: no;
help: no; dialogWidth:840px; dialogHeight:720px;";

var CONST_EditImageDialogDialogName="AssetImagePicker.aspx";
var CONST_EditImageDialogDialogFeatures="resizable: yes; status: no; scroll: no;
help: no; dialogWidth:745px; dialogHeight:640px;";
```

It is also possible to only turn on the SLIM editor in certain domains or directories on the server

E.g. if a certain name is in the URL use the new values else use the original values

```
var MyPageURL = document.URL.toLowerCase();
if (MyPageURL.indexOf("cfdevimages") >= 0) {
```

By default, the `_layouts` folder is always based on the current “Site” being edited. If you have many sub sites, leaving this will cause a separate XAP file to be downloaded for each sub site edited, and also the inability to share Light box images between Sites.

This is controlled by the “`AssetPickerConfig_GetDialogUrl`” function in the `asset pickers.js`

The middle IF statement can be removed. The “`CurrentWebBaseUrl`” will then not get appended to the front of the `/_layouts/` url, keeping it based on the same root site for all sub sites.

```
function AssetPickerConfig_GetDialogUrl( dialogName )
{
    var dialogurl="/_layouts/"+dialogName;

    // Remove to keep slim based on the same URL
    //if(this.CurrentwebBaseUrl && this.CurrentwebBaseUrl != "")
    //{
        dialogurl=this.CurrentwebBaseUrl+dialogurl;
    //}

    return dialogurl;
}
```

## APPENDIX C: MANUALLY DEPLOYING RESAMPLING DLL IN THE WEB SITE BIN FOLDER (FOR DEBUGGING ONLY)

By default, the EIT\_ImageResampler.dll is deployed to the GAC as part of the EIT.Silverlight.SLIM.wsp SharePoint Solution Package.

To debug the EIT\_ImageResampler.dll assembly,

1. You need to locate the bin folder for each instance of SharePoint that is running on the server (and will be supporting Image resampling) and copy the version of the assembly to be debugged to that directory.  
e.g. c:\Inetpub\wwwroot\ws\VirtualDirectories\cfdevimages.envisionit.com80\bin
2. Remove the detailed strong name for the assembly in the web.config file. Replace it with:

```
<system.web>
...
  <httpHandlers>
...
    <!-- Envision IT Image Resampler -->
    <add verb="*" path="ImageResampler.ashx"
type="EIT_ImageResampler.cImage,EIT_ImageResampler" />
  </httpHandlers>
```

3. In addition, the trust level in the web.config needs to be set to true.

```
<trust level="Full" originUrl="" />
```

## APPENDIX D: COPY THE CROSS DOMAIN SECURITY XML FILES TO THE ROOT OF THE WEB SITE

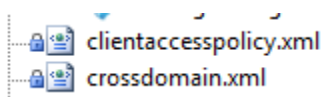
Before any Silverlight app will talk to a remote server, that server has to have at least one of these XML files in the root directory of the Web Server.

It is the Server that is then saying “Yes you may come and visit” when it is explicitly asked. If it doesn’t know the answer to the question, Silverlight denies access.

If the Server is running SharePoint (as is expected) then SharePoint Designer must be used to save the XML files into the Root of the server. For more details, checkout EIT Knowledge Base Article <https://secure.envisionit.com/sites/envisionit/Knowledge%20Base/How%20to%20deploy%20XML%20files%20to%20the%20Sharepoint%20Root%20without%20Sharepoint%20Designer.doc> .

Interestingly this is the same process that Adobe uses for Flash (notice the one even has a macromedia DTD)

```
<?xml version="1.0" encoding="utf-8"?>
<access-policy>
  <cross-domain-access>
    <policy>
      <allow-from http-request-headers="*">
        <domain uri="*" />
      </allow-from>
      <grant-to>
        <resource path="/" include-subpaths="true" />
      </grant-to>
    </policy>
  </cross-domain-access>
</access-policy>
```



```
<?xml version="1.0"?>
<!DOCTYPE cross-domain-policy SYSTEM "http://www.macromedia.com/xml/dtds/cross-
domain-policy.dtd">
<cross-domain-policy>
  <allow-http-request-headers-from domain="*" headers="*" />
</cross-domain-policy>
```

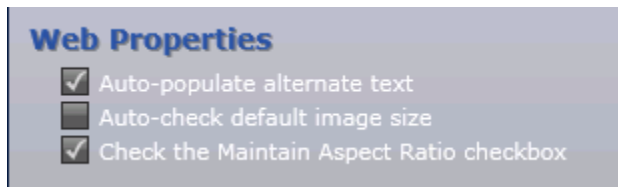
These say, that any client is allowed to connect from any domain. Some production installations may wish to only allow connections within their own specific domain for instance. A copy of the above XML files can be found in the SLIM/Deployment/CrossDomainFiles folder in TFS.

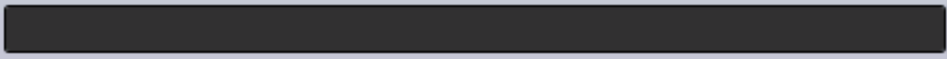
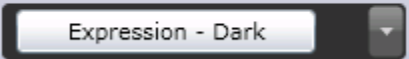
## APPENDIX E: SLIM SILVERLIGHT CONTROL CONFIGURATION

Some configuration of SLIM is possible via the `EIT_SPSLIM2.aspx` file.

The `InitParams` parameter. All items should appear on a single line, Comma separated. They are shown expanded on separate lines here for clarity.

```
<param name="initParams"
    value="SPWeb=<%=SPWeb%>,
        AltTextAutoPopulate=Yes,
        DefaultImageSize=No,
        MaintainAspectRatio=Yes,
        DisplayTheme=ExpressionDark" />
```



Configuration Init Param	Description	Valid Values
AltTextAutoPopulate	“Auto-populate alternate text” When the Select Image button is clicked and the alternate text is blank, automatically populate it with the description or title of the selected image	<b>Yes</b> No YesLocked NoLocked
Alternate Text 		
DefaultImageSize	“Auto-check default image size” When the Select Image button is clicked, automatically check the default image size checkbox so that newly selected images retain their default size.	<b>Yes</b> <b>No</b> YesLocked NoLocked
Size <input checked="" type="checkbox"/> Default image size		
MaintainAspectRatio	“Check the Maintain Aspect Ratio checkbox” When opening SLIM determine the state of the Maintain Aspect Ratio checkbox on the web properties pane	<b>Yes</b> No YesLocked NoLocked
<input checked="" type="checkbox"/> Maintain Aspect Ratio		
DisplayTheme	Provides the default theme for SLIM	
Visual Theme 		

If a Locked option is specified, the option is locked for the end-user, and is read-only in the configuration pane. If it is not locked, the user can choose a value, and this is saved in the Silverlight configuration and used as the default when SLIM is launched by that user on that PC again. Locked default values always override user selected defaults.

These parameters are persisted to the Silverlight Application Storage on the local system when the option is changed on the configuration panel by the user in SLIM. When initializing SLIM, the following decision tree will be used to set the values:

- Any Init Param set to a locked value takes precedence
- Any saved local values are then used if no locked values are found
- The Yes and No Init Param values are used if there are no saved values
- The bolded default values from the table above are used if there are no Init Param values

## APPENDIX F: SHADOW IMAGES URL REPLACER

The ShadowImages Folder (as discussed elsewhere in this document) holds resampled images but maintains a link back to the original Image. So when the page is edited again, the original image can be displayed in SLIM and resampled again if necessary. Because of this backwards link, the Where Images used functionality, will know about all resampled images and treat them as if they are the master image.

When copying a SharePoint site, that contains a ShadowImages List. The URLs in the List will often be incorrect on the new server.

This Console App allows renaming of the URLs. Only the SourceImageURL metadata field is modified.

See Deployment\ConsoleApps directory for EXE and config. It is not automatically deployed to the server in the WSP file.

```

-----
Envision IT - SLIM Silverlight Image Management - Shadow Images URL Replacer Console App - 2.2.1.0
-----
Starting at 2010-Jan-06 5:23:32 pm

The purpose of this app is to replace text in the SourceImageURL metadata field in a SharePoint Images Library.
Typically this is required when backing up a folder, and moving it to another server.

SLIM Silverlight Image Management - Shadow Images URL Replacer Console App Usage:
ShadowImagesURLReplacer.exe [Url to ShadowImages Folder] [Text to search for] [Text to Replace]
e.g.
ShadowImagesURLReplacer.exe http://cfdevimages.envisionit.com/ShadowImages/ www1. eitwebdev.
all three parameters must be specified
the use of spaces and quotes are not recommended.

Finished at 2010-Jan-06 5:23:32 pm

```

On the Command line you must specify:

- The URL to the ShadowImages Folder
- The string to look for in the URL
- The string to replace this with in the URL

e.g.

ShadowImagesURLReplacer.exe http://cfdevimages.envisionit.com/ShadowImages/ www1. eitwebdev.

Will find all the urls with www1. And change them to eitwebdev. (the name of the new server)

The configuration file, is required for the program to run, but there is nothing to configure in it. The local account must have sufficient permissions to change the ShadowImages Library contents, but this is typically the case, of anyone Editing pages using SLIM.

## APPENDIX G: TELERIK RADEDITOR FOR ASP.NET AJAX INTEGRATION

If your site is built using the Telerik RadEditor for ASP.NET AJAX Integration rather than the default SharePoint rich text editor, you can still use SLIM for placing image references in your HTML content. The following instructions assume you have already modified your assetpicker.js to use SLIM.

Instructions:

Modify **ToolsFile.xml** located in C:\Program Files\Common Files\Microsoft Shared\web server extensions\wpresources\RadEditorSharePoint\5.7.3.0\_\_1f131a624888eed\Resources

Change

```
<tool name="ImageManager" shortcut="CTRL+G" />
```

to

```
<tool name="MOSSImageManager" shortcut="CTRL+G" />
```

Once saved it will use the MossImageManager but because the assetpickers.js file has been modified, it will bring up SLIM.